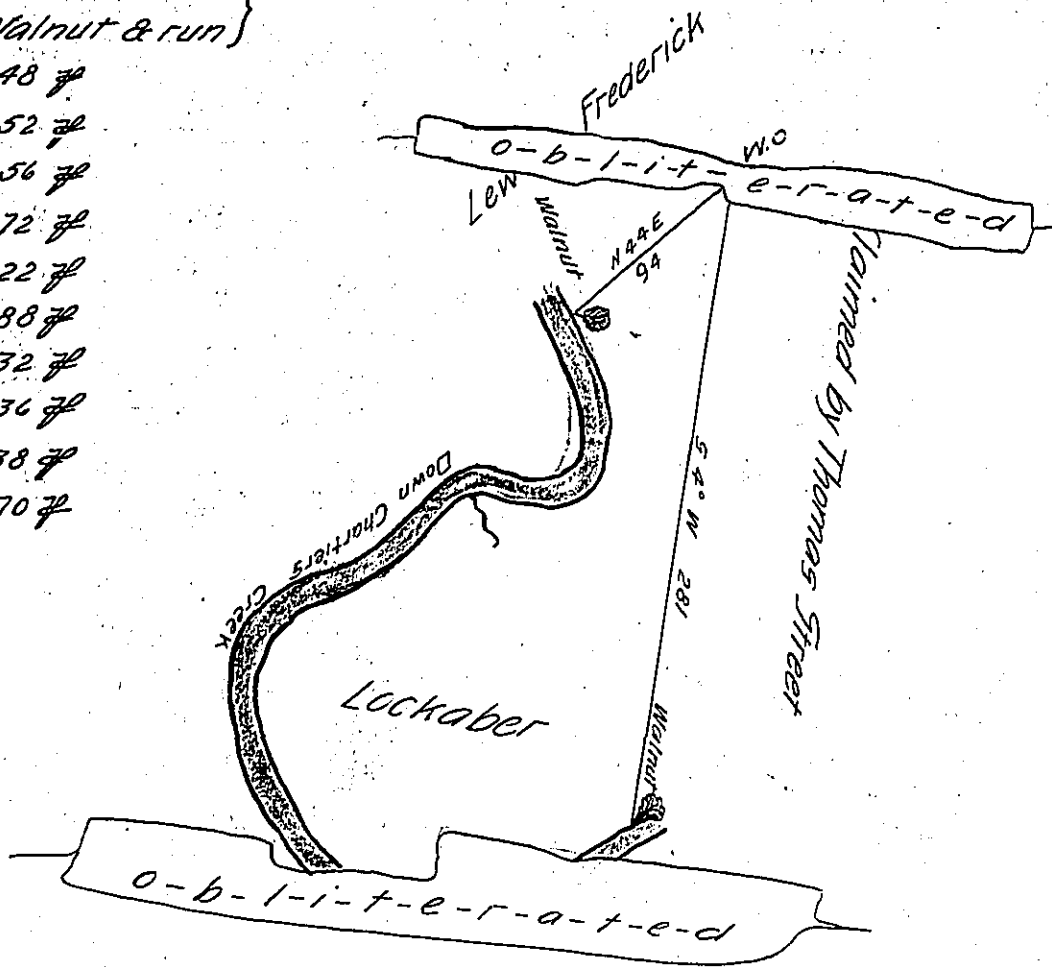


Sample 189

197

244

o-b-l-i-t-e-r-a-t-e-d
 Beg at a Walnut & run
 S 60° W 48 f
 S 70 W 52 f
 N 68 W 56 f
 N 25 W 72 f
 N 13 E 22 f
 N 55 E 88 f
 N 42 E 32 f
 S 46 E 36 f
 N 41 E 38 f
 N 19 W 70 f
 to a Walnut.



In pursuance of an order No. 3114 dated 20th April 1769 the above
 draught of a tract of land call'd Lockaber situated on the West side
 Monongahala containing 169. 3. 38 acres with the usual allowance of
 6 P.C. for roads highways &c. survey'd for Henry Wright 29th June
 by James Hendricks

John Lukens Esq^r
 Surveyor General

IN TESTIMONY that the above is a copy of the original remaining on file in
 the Department of Internal Affairs of Pennsylvania, made
 conformably to an Act of Assembly approved the 16th day of
 February, 1833, I have hereunto set my Hand and caused
 the Seal of said Department to be affixed at Harrisburg,
 this first day of June 1904

Joseph P. Brown
 Secretary of Internal Affairs.